



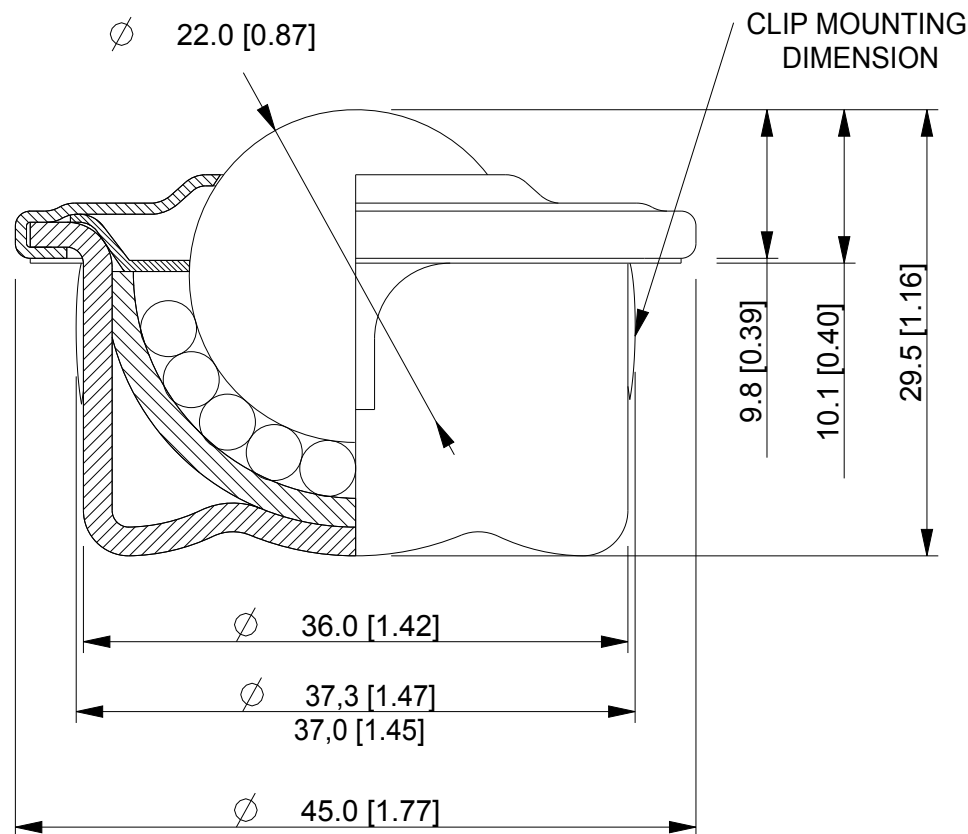
OMNI-DIRECTIONAL SOLUTIONS

L22 OMNITRACK LIGHT DUTY BALL TRANSFER UNIT

REVISION # 01

Available Material Options

Part #	Load bearing internal materials	Main Ball Material	Casing material & finish	Load Capacity	Mounting Clip Option
L22	AISI 52100	AISI 52100	AISI 1015 -Zinc plated	160 kg	Without Clip
L22-C	AISI 52100	AISI 52100	AISI 1015 -Zinc plated	160 kg	With Clip
L22A	AISI 52100	AISI 420	AISI 1015 -Zinc plated	160 kg	Without Clip
L22A-C	AISI 52100	AISI 420	AISI 1015 -Zinc plated	160 kg	With Clip
L22SS	AISI 420	AISI 420	AISI 304 -Natural	100 kg	Without Clip
L22SS-C	AISI 420	AISI 420	AISI 304 -Natural	100 kg	With Clip
L22D	AISI 52100	Acetal (POM)	AISI 1015 -Zinc plated	20 kg	Without Clip
L22D-C	AISI 52100	Acetal (POM)	AISI 1015 -Zinc plated	20 kg	With Clip



ALL DIMENSIONS IN mm [inch]
IF VIEWED AS PDF, DO NOT SCALE
IF VIEWED AS DWG, SCALE 2 : 1
TOLERANCE ± 0.25
QMF 31 ISSUE 01 : 22/06/2012

OMNITRACK LTD
RODBOROUGH COURT
STROUD, GL5 3LR, ENGLAND

Telephone: +44 (0)1453 873 345
Fax: +44 (0)1453 878 500
info @ omnitrack.com
www.omnitrack.com

THIS DOCUMENT CONTAINS OMNITRACK LTD PROPERTY AND CONFIDENTIAL INFORMATION. IT IS LOANED FOR LIMITED PURPOSES ONLY AND REMAINS THE PROPERTY OF OMNITRACK LTD. IT MAY NOT BE REPRODUCED IN WHOLE OR PART OR DISCLOSED TO THIRD PARTIES WITHOUT THE PRIOR WRITTEN CONSENT OF OMNITRACK LTD. THE DOCUMENT IS TO BE RETURNED TO OMNITRACK LTD UPON REQUEST AND IN ALL EVENTS UPON COMPLETION OF THE USE FOR WHICH IT WAS LOANED