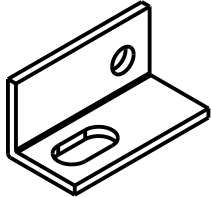
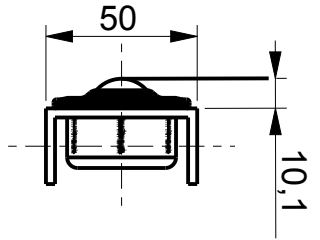
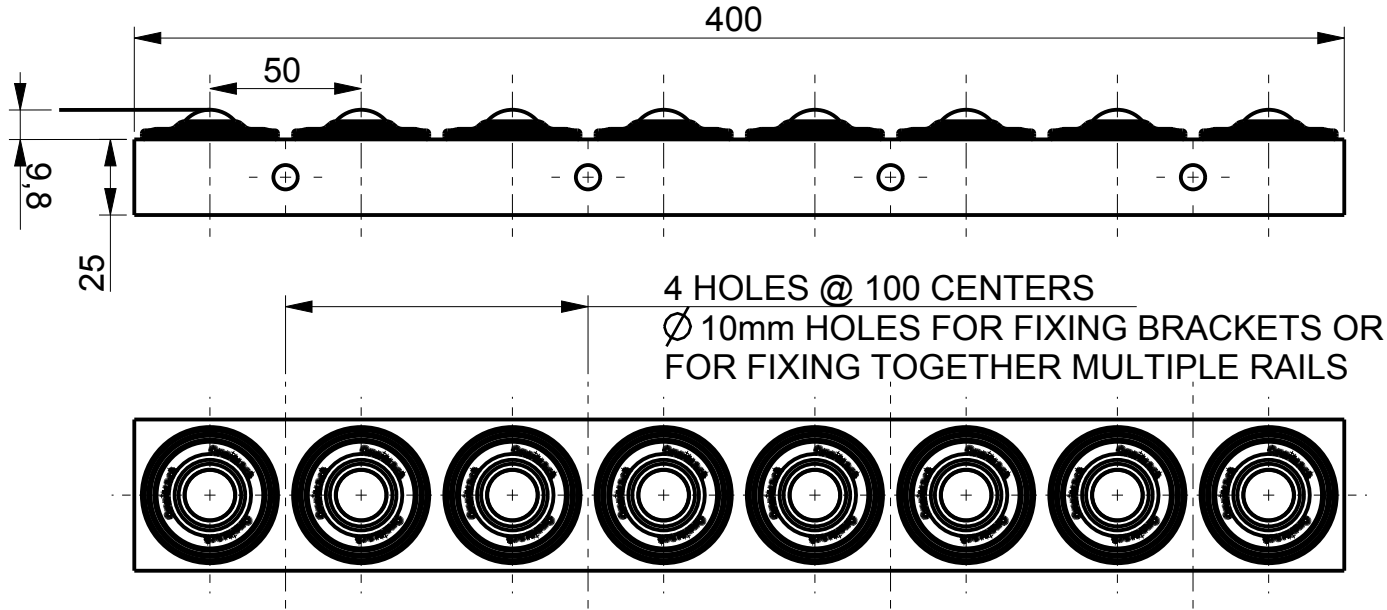
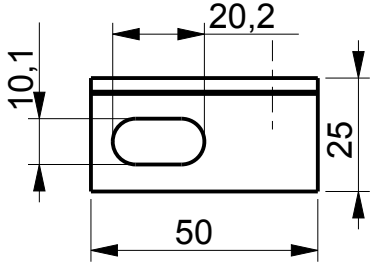


**R22-400
OMNITRACK
BALL TRANSFER RAIL**



**FIXING BRACKET - RB1
OPTIONAL 50 X 25mm
BRACKET MADE FROM
3mm THICK ANGLE**



| Material Options | | | |
|------------------|--------------------------------------|---------------|--------------------|
| Part Number | Bar Material | Ball Material | Load Rating |
| R22-400 | AISI 1012 Electrophoretic (Black) | AISI 52100 | 1280 kg / 2800 lbs |
| R22-400A | AISI 1012 Electrophoretic (Black) | AISI 420 | 1280 kg / 2800 lbs |
| R22-400D | AISI 1012 Electrophoretic (Black) | Acetal (POM) | 160 kg / 352 lbs |
| R22-400SS | AISI 304 - Natural | AISI 420 | 720 kg / 1600 lbs |

REVISION # 01
ALL DIMENSIONS IN mm [inch]
IF VIEWED AS PDF, DO NOT SCALE
IF VIEWED AS DWG, SCALE x : x
TOLERANCE ± 0,25 [0,01]
QMF 31 ISSUE 02 : 09/01/2017

OMNITRACK
RODBOROUGH COURT
STROUD, GL5 3LR, ENGLAND

Telephone: +44 (0)1453 873 345
Fax: +44 (0)1453 878 500
info @ omnitrack.com
www.omnitrack.com

THIS DOCUMENT CONTAINS OMNITRACK PROPERTY AND CONFIDENTIAL INFORMATION. IT IS LOANED FOR LIMITED PURPOSES ONLY AND REMAINS THE PROPERTY OF OMNITRACK. IT MAY NOT BE REPRODUCED IN WHOLE OR PART OR DISCLOSED TO THIRD PARTIES WITHOUT THE PRIOR WRITTEN CONSENT OF OMNITRACK. THE DOCUMENT IS TO BE RETURNED TO OMNITRACK UPON REQUEST AND IN ALL EVENTS UPON COMPLETION OF THE USE FOR WHICH IT WAS LOANED.