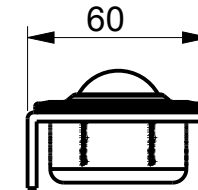
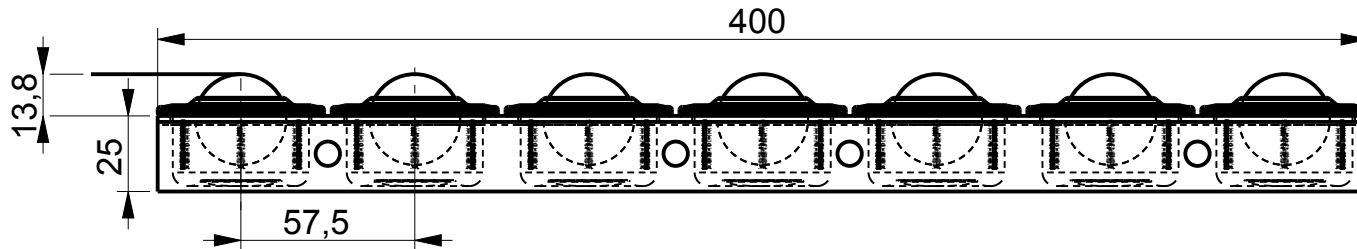
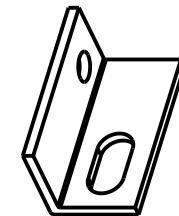
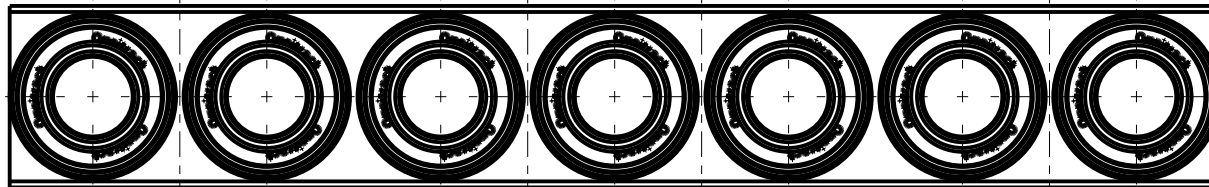


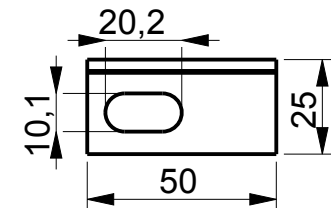
**R30-400
OMNITRACK
BALL TRANSFER RAIL**



4 HOLES 57,5mm CENTERS
Ø 10mm HOLES FOR FIXING BRACKETS OR
FOR FIXING TOGETHER MULTIPLE RAILS



**FIXING BRACKET - RB1
OPTIONAL 50 x 25mm
BRACKET MADE FROM
3mm THICK ANGLE**



Material Options			
Part Number	Bar Material	Ball Material	Load Rating
R30-400	AISI 1012 Electrophoretic (Black)	AISI 52100	1960 kg / 4340 lbs
R30-400A	AISI 1012 Electrophoretic (Black)	AISI 420	1960 kg / 4340 lbs
R30-400D	AISI 1012 Electrophoretic (Black)	Acetal (POM)	175 kg / 385 lbs
R30-400SS	AISI 304 - Natural	AISI 420	1400 kg / 3150 lbs

REVISION # 01
ALL DIMENSIONS IN mm [inch]
IF VIEWED AS PDF, DO NOT SCALE
IF VIEWED AS DWG, SCALE x : x
TOLERANCE ± 0,25 [0,01]
QMF 31 ISSUE 02 : 09/01/2017

OMNITRACK
RODBOROUGH COURT
STROUD, GL5 3LR, ENGLAND

Telephone: +44 (0)1453 873 345
Fax: +44 (0)1453 878 500
[info @ omnitrack.com](mailto:info@omnitrack.com)
www.omnitrack.com

THIS DOCUMENT CONTAINS OMNITRACK PROPERTY AND CONFIDENTIAL INFORMATION. IT IS LOANED FOR LIMITED PURPOSES ONLY AND REMAINS THE PROPERTY OF OMNITRACK. IT MAY NOT BE REPRODUCED IN WHOLE OR PART OR DISCLOSED TO THIRD PARTIES WITHOUT THE PRIOR WRITTEN CONSENT OF OMNITRACK. THE DOCUMENT IS TO BE RETURNED TO OMNITRACK UPON REQUEST AND IN ALL EVENTS UPON COMPLETION OF THE USE FOR WHICH IT WAS LOANED